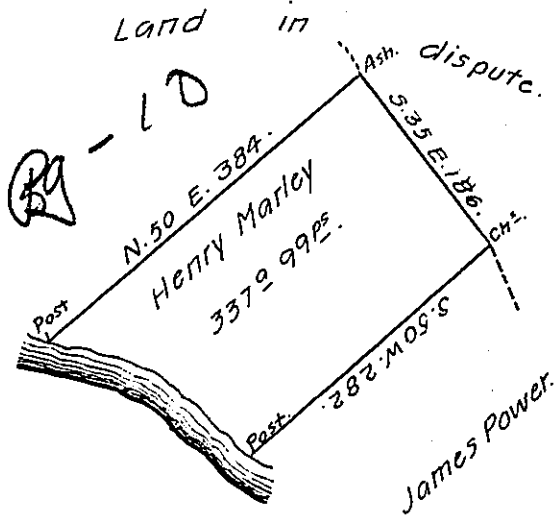


River Courses beginning at Post.

N. 49	W. 42
N. 44	W. 38
N. 50	W. 28.
N. 67 1/2	W. 33.
N. 82	W. 22.
S. 89	W. 40.
S. 79	W. 10
<hr/>	
213 ps.	



Situate on and adjoining the East Side of French Creek in Allegheny County  
 Containing 337 Acres 99 perches &c allowance of Six pr. Cent for Roads &c.  
 Surveyed the 20<sup>th</sup> day of May 1794 In pursuance of his Improvement Bearing  
 date the 20<sup>th</sup> day of August 1793

To Daniel Brodhead Esqr, }  
 surveyor General.

W<sup>m</sup> Power DYSE

IN TESTIMONY that the above is a copy of the original remaining on file in  
 the Department of Internal Affairs of Pennsylvania, made  
 conformably to an Act of Assembly approved the 16th day of  
 February, 1833, I have hereunto set my Hand and caused  
 the Seal of said Department to be affixed at Harrisburg,  
 this twenty second day of September, 1908.

*Henry Howick*  
 Secretary of Internal Affairs.